

## LED Pro-Via

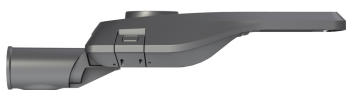
PAGE 1/2

LED Pro-Via S + Zhaga

# 41350153

EAN: 8719689131982

Pro-Via is a versatile and efficient street luminaire that reduces energy consumption and CO2 emissions while improving the quality of life and safety in the public space. The contemporary design integrates seamlessly into the modern cityscape, where it provides visually comfortable lighting. A variety of optics and a myriad of lumen output options make Pro-Via adaptable to almost any situation or lighting requirement in the public environment. Moreover, the product is maintenance-friendly with a light unit and driver module that can be replaced without tools.



## PRODUCT FEATURES

Mounting method	Post top/side entry	Suitable for number of light sources	1
Lamp type	LED exchangeable	LED nominal current at constant current	525 525 Milliampere
With light source	✓	Nominal voltage	220 240 Volt
Lamp holder	Other	Rated life time L70/B10 at 25 °C	150000 Hour
Housing material	Aluminium	Lumen maintenance at median useful life of 50,000 h at 25 °C ambient (tq)	0.97 Percentage
Surface protection	Powder coating	Lumen maintenance at median useful life of 100,000 h at 25 °C ambient (tq)	0.95 Percentage
Housing colour	Grey	Rated life time L90/B50 at 25 °C	60000 Hour
Material cover	Glass transparent	Rated lifetime L70/B50 at 25 °C	170000 Hour
Solar powered	✗	Rated lifetime L80/B50 at 25 °C	110000 Hour
With integrated PV panel	✗	Rated life time L80/B10 at 25 °C	100000 Hour
Built-in battery	✗	Max. number of luminaires per miniature circuit breaker B16 (MCB)	21
Suitable for off-grid power system	✗	Rated life time L90/B10 at 25 °C	50000 Hour
Voltage type	AC	Max. number of luminaires per miniature circuit breaker C16 (MCB)	35
With control gear	✓	Rated ambient temperature according to IEC 62722-2-1	-40 50 Degrees celsius
Type of control gear	LED operating device current-controlled	Cable length	10 Metre
Exchangeable control gear	✓	Suitable for lamp power	8 60 Watt
Dimmable	✓	Rated luminous flux according to IEC 62722-2-1	4000 Lumen
Dimming DALI-2	✓	Max. system power	27 Watt
Dimming 0-10 V	✗	Rated luminous flux according to IEC 62722-2-1	4000 4000 Lumen
Dimming 1-10 V	✗	Luminaire efficacy	148 Lumen/Watt
Dimming GPRS	✗	Colour temperature	4000 4000 Kelvin
Dimming DALI	✓	Power factor	0.9
Dimming D4i	✓	Width	240 Millimetre
Dimming DMX	✗	Height/depth	138 Millimetre
Dimming DSI	✗	Length	441 Millimetre
Dimming potentiometer (integrated)	✗	Suitable for spigot size	42 60 Millimetre

## LED Pro-Via

PAGE 2/2

LED Pro-Via S + Zhaga

# 41350153

EAN: 8719689131982

### PRODUCT FEATURES

(continuation)

Dimming LineSwitch	✗	Number of poles	3
Dimming manufacturer's proprietary system	✗	Conductor cross section	1 Square millimetre
Dimming mains voltage modulation	✗	Connectable conductor cross section	0.75 2.5 Square millimetre
Dimming phase cut-off (trailing edge)	✗		
Dimming phase cut-on (leading edge)	✗		
Dimming Touch and Dim	✗		
Dimming programmable	✓		
Dimming with push-button	✗		
No dim function	✗		
Dimming RF	✗		
Dimming Sine Wave Reduction	✗		
Dimming Zigbee	✗		
Light distributor	Diffuser lens/optic/panel		
Adjustable optics	✗		
Colour consistency (McAdam ellipse)	SDCM5		
Containing product according to 2019/2020/EU	✓		
Energy efficiency class of the light source according to EU regulation 2019/2015	B		
Degree of protection (IP)	IP66		
Impact strength	IK08		
Protection class according to IEC 61140	I		
Luminaire with limited surface temperature, sign "D" according to EN 60598-2-24	✗		
Remote control	None		
With radio control	✗		
Constant light output (CLO)	✗		
With light regulation program control	✓		
With connection cable	✓		
Colour of light	White		
Colour rendering index CRI	70-79		
Type of wiring	Ending		
Compatible with Apple HomeKit	✗		
Compatible with Google Assistant	✗		
Connection type	Screwed terminal		
Compatible with Amazon Alexa	✗		
IFTTT support available	✗		
Zhaga-D4i certified	✓		
Operation by Bluetooth	✗		
With light sensor	✗		
With movement sensor	✗		
With presence detector	✗		
Type of connection for sensor/communication module	Single Zhaga socket (on top)		