

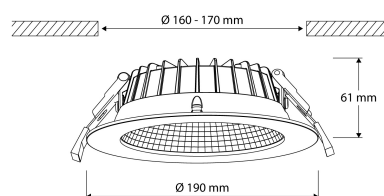
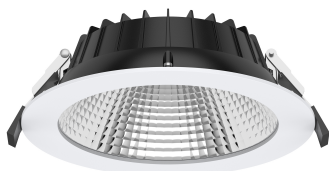
Pro-Fusion 160

40002935

EAN: 8720615509195

A NEXT LEVEL DOWNLIGHT INNOVATION COMBINING PREMIUM FEATURES AND AN INDUSTRY-LEADING PERFORMANCE

Groundbreaking in performance, reliability and application possibilities. Pro-Fusion is an innovative solid state lighting solution designed to deliver illumination performance, unequalled in the market. Whether it concerns general lighting for a new construction project or the replacement of compact fluorescent downlights in existing buildings, the Pro-Fusion realizes lighting that is considerably more comfortable while substantially minimizing energy costs.



PRODUCT FEATURES

Suitable for surface mounting	✓	Suitable for number of light sources	1
Suitable for built-in mounting	✓	LED nominal current at constant current	200 550 Milliampere
Suitable for wall mounting	✗	Nominal voltage	220 240 Volt
Suitable for wall mounting	✗	Nominal current	200 550 Milliampere
Suitable for suspended mounting	✗	Total harmonic distortion	20
Suitable for ceiling mounting	✓	Rated life time L70/B10 at 25 °C	164000 Hour
Suitable for traverse mounting	✗	Rated lifetime L70/B50 at 25 °C	180000 Hour
Suitable for pedestal/floor mounting	✗	Rated life time L80/B10 at 25 °C	91000 Hour
Suitable for light-track mounting	✗	Rated lifetime L80/B50 at 25 °C	104000 Hour
Suitable for clamp-mounting	✗	Lumen maintenance at median useful life of 35,000 h at 25 °C ambient (tq)	93 Percentage
Suitable for low voltage cable system	✗	Lumen maintenance at median useful life of 50,000 h at 25 °C ambient (tq)	90 Percentage
Adjustability	Not adjustable	Rated life time L90/B10 at 25 °C	50000 Hour
With movement sensor	✗	Lumen maintenance at median useful life of 100,000 h at 25 °C ambient (tq)	80 Percentage
With light sensor	✗	Rated life time L90/B50 at 25 °C	53000 Hour
Lamp type	LED not exchangeable	Failure rate at median useful life of 35,000 h at 25 °C ambient (tq)	0 Percentage
With light source	✓	Failure rate at median useful life of 50,000 h at 25 °C ambient (tq)	0 Percentage
Lamp holder	None	Failure rate at median useful life of 100,000 h at 25 °C ambient (tq)	0 Percentage
Housing material	Aluminium	Rated ambient temperature according to IEC 62722-2-1	-20 40 Degrees celsius
Surface protection	Powder coating	Suitable for lamp power	8 22 Watt
Housing colour	White	Max. system power	25 Watt
Material cover	Plastic, transparent	Luminous flux	1273 3015 Lumen
Surface brushed	✗	Rated luminous flux according to IEC 62722-2-1	3015 Lumen
Voltage type	AC	Lamp efficacy	166 Lumen/Watt
Type of control gear	LED operating device current-controlled	Colour temperature	3000 4000 Kelvin
With control gear	✓	Built-in diameter	170 Millimetre

LED Pro-Fusion

Pro-Fusion 160

40002935

EAN: 8720615509195

PRODUCT FEATURES

(continuation)

Dimming depending on control gear	✓	Power factor	0.9
Exchangeable control gear	✓	Flickering value Pst LM	0.009
Dimming 0-10 V	✓	Built-in height/depth	58 Millimetre
Dimming 1-10 V	✓	Stroboscope effect value SVM	0.4
Dimming DALI-2	✓	Height/depth	61 Millimetre
Dimming DALI	✓	Outer diameter	190 Millimetre
Dimming DMX	✗	Built-in diameter	160 170 Millimetre
Dimming DSI	✗	Number of poles	3
Dimming GPRS	✗	Conductor cross section	2.5 Square millimetre
Dimming potentiometer (integrated)	✓	Connectable conductor cross section	0.75 2.5 Square millimetre
Dimming LineSwitch	✗	Luminaire efficacy	166 Lumen/Watt
Dimming manufacturer's proprietary system	✗	Max. number of luminaires per miniature circuit breaker B16 (MCB)	33
Dimming mains voltage modulation	✗	Max. number of luminaires per miniature circuit breaker C16 (MCB)	55
Dimming phase cut-off (trailing edge)	✗	Unified Glare Ratio (UGR)	21
Dimming phase cut-on (leading edge)	✗		
Dimming programmable	✓		
Dimming RF	✗		
Dimming Sine Wave Reduction	✗		
Dimming Touch and Dim	✗		
Dimming Zigbee	✗		
No dim function	✗		
Dimming with push-button	✓		
Reflector	High-gloss		
Light distributor	Diffuser lens/optic/panel		
Light distribution	Symmetric		
Reflector colour	Other		
Beam angle	41-80° - Wide beam		
Light outlet	Direct		
Energy efficiency class	A		
Energy efficiency class of the built-in lamp	A		
Energy efficiency class of the light source according to EU regulation 2019/2015	A		
Degree of protection (IP)	IP54		
Constant light output (CLO)	✗		
Degree of protection (NEMA)	3R		
Impact strength	IK07		
Protection class according to IEC 61140	II		
Colour of light	White		
Colour of light adjustable	Positions		
Colour rendering index CRI	80-89		
Luminous flux adjustable	Positions		
Beam angle adjustable	No		
Type of wiring	Suitable for loop-through wiring		
Emergency power supply integrated	✗		
Connection type	Push-in clamp		
Luminaire with limited surface temperature, sign "D" according to EN 60598-2-24	✗		
Filament test according to IEC 60695-2-11	960 °C - 30 s		
Photobiological safety according to EN 62471	RG1		
Suitable for workplace according to EN 12464-1	✓		

LED Pro-Fusion

Pro-Fusion 160

40002935
EAN: 8720615509195

PRODUCT FEATURES
(continuation)

Covering of the luminaire with thermally insulating material possible	✕
IFTTT support available	✕
Colour consistency (McAdam ellipse)	SDCM3
Compatible with Apple HomeKit	✕
Operation by Bluetooth	✕
Compatible with Google Assistant	✕
Compatible with Amazon Alexa	✕