

LED Pro-Ceiling

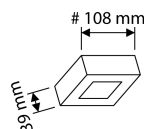
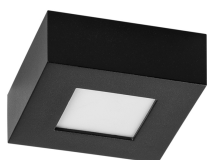
LED Pro-Ceiling 108x108 mm (surface mount)

40001805

EAN: 8721063000203

THE WARMTH OF DECORATIVE LIGHTING COMBINED WITH A SOPHISTICATED, MODERN DESIGN

The Prolumia Pro-Ceiling series are unique in their design. They combine the warmth of decorative lighting with the refinement of a high-end, contemporary luminaire. Available in round, square or rectangular shapes and various sizes for recessed or surface mounted installation onto wall or ceiling. Pro-Ceiling has a lifespan of more than 50.000 hours, the luminaire comes with an integrated power supply and offers ease of installation.



PRODUCT FEATURES

Suitable for wall mounting	✓	Suitable for number of light sources	1
Suitable for wall mounting	✓	LED nominal current at constant current	500 500 Milliampere
Suitable for suspended mounting	✗	Nominal voltage	220 240 Volt
Suitable for ceiling mounting	✓	Nominal current	500 500 Milliampere
Suitable for built-in mounting	✗	Rated lifetime L80/B50 at 25 °C	111000 Hour
Suitable for surface mounting	✓	Rated lifetime L70/B50 at 25 °C	177000 Hour
Suitable for light line configuration	✗	Rated life time L70/B10 at 25 °C	142000 Hour
Suitable for workplace according to EN 12464-1	✗	Lumen maintenance at median useful life of 35,000 h at 25 °C ambient (tq)	93 Percentage
Lamp type	LED not exchangeable	Lumen maintenance at median useful life of 50,000 h at 25 °C ambient (tq)	91 Percentage
With light source	✓	Lumen maintenance at median useful life of 75,000 h at 25 °C ambient (tq)	85 Percentage
Lamp holder	Other	Failure rate at median useful life of 35,000 h at 25 °C ambient (tq)	0 Percentage
Housing material	Aluminium	Failure rate at median useful life of 50,000 h at 25 °C ambient (tq)	0 Percentage
Surface protection housing	Powder coating	Rated life time L80/B10 at 25 °C	89000 Hour
Housing colour	Black	Rated life time L90/B10 at 25 °C	43000 Hour
Material cover	Plastic, opal	Failure rate at median useful life of 75,000 h at 25 °C ambient (tq)	0 Percentage
Type of grid	None	Rated life time L90/B50 at 25 °C	53000 Hour
Voltage type	AC	Max. number of luminaires per miniature circuit breaker B16 (MCB)	28
Type of control gear	LED operating device current-controlled	Max. number of luminaires per miniature circuit breaker C16 (MCB)	48
With control gear	✓	Rated ambient temperature according to IEC 62722-2-1	-10 40 Degrees celsius
Exchangeable control gear	✓	Luminaire efficacy	72 Lumen/Watt
Dimmable	✓	Rated luminous flux according to IEC 62722-2-1	600 Lumen
Dimming 0-10 V	✗	Suitable for lamp power	7.69 7.69 Watt
Dimming 1-10 V	✗	Luminaire efficacy	72 72 Lumen/Watt
Dimming DALI	✗	Max. system power	8 Watt

LED Pro-Ceiling

LED Pro-Ceiling 108x108 mm (surface mount)

40001805

EAN: 8721063000203

PRODUCT FEATURES

(continuation)

Dimming DALI-2	✗	Rated luminous flux according to IEC 62722-2- 1	550 550 Lumen
Dimming DMX	✗	Colour temperature	2700 4000 Kelvin
Dimming GPRS	✗	Flickering value Pst LM	0.01
Dimming LineSwitch	✗	Power factor	0.92
Dimming DSI	✗	Stroboscope effect value SVM	0.4
Dimming manufacturer's proprietary system	✗	Width	108 Millimetre
Dimming mains voltage modulation	✗	Height/depth	39 Millimetre
Dimming phase cut-off (trailing edge)	✓	Length	108 Millimetre
Dimming phase cut-on (leading edge)	✓	Total harmonic distortion	20
Dimming programmable	✗	Number of poles	2
Dimming potentiometer (integrated)	✗	Conductor cross section	2.5 Square millimetre
Dimming RF	✗	Unified Glare Ratio (UGR)	22
Dimming Sine Wave Reduction	✗		
Dimming Touch and Dim	✗		
Dimming Zigbee	✗		
Dimming with push-button	✗		
No dim function	✗		
Dimming depending on control gear	✓		
Light distributor	Diffuser lens/optic/panel		
Light distribution	Symmetric		
Beam angle	> 80° - Extreme wide beam		
Colour consistency (McAdam ellipse)	SDCM4		
Light outlet	Direct		
Energy efficiency class of the light source according to EU regulation 2019/2015	C		
Energy efficiency class of the built-in lamp	Other		
Power supply energy efficiency index (EEI)	Other		
Energy efficiency class of the provided exchangeable built-in lamp	C		
Degree of protection (IP)	IP40		
Degree of protection (NEMA)	3		
Impact strength	IK08		
Protection class according to IEC 61140	II		
Luminaire with limited surface temperature, sign "D" according to EN 60598-2-24	✗		
Emergency power supply integrated	✗		
Suitable for emergency lighting	✗		
With movement sensor	✗		
With light sensor	✗		
Covering of the luminaire with thermally insulating material possible	✗		
With air slots	✗		
Filament test according to IEC 60695-2-11	650 °C - 30 s		
Colour of light according to EN 12464-1	Neutral white 3300-5300 K		
Colour of light	White		
Colour rendering index CRI	80-89		
Constant light output (CLO)	✗		
Type of wiring	Ending		
Connection type	Push-in clamp		
Photobiological safety according to EN 62471	RG1		
Colour of light adjustable	Positions		

LED Pro-Ceiling

LED Pro-Ceiling 108x108 mm (surface mount)

40001805
EAN: 8721063000203

PRODUCT FEATURES
(continuation)

Luminous flux adjustable	Positions
Beam angle adjustable	No
Operation by Bluetooth	✗
Compatible with Casambi	✗
Compatible with Apple HomeKit	✗
Compatible with Google Assistant	✗
Compatible with Amazon Alexa	✗
IFTTT support available	✗
Meets min. EIA lifetime criterion L90 (at 50,000 hours at tq = 25 °C)	✗