

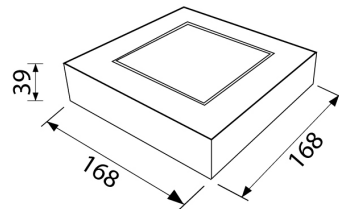
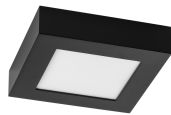
LED Pro-Ceiling + microwave sensor

40001260S

EAN: 8720615508143

THE WARMTH OF DECORATIVE LIGHTING COMBINED WITH A SOPHISTICATED, MODERN DESIGN

The Prolumia LED Pro-Ceiling series are unique in their design. It combines the warmth from a decorative light with the refinement of a modern, nowadays armature. Available in a round or square shape for ceiling or wall mounting The Prolumia LED Pro-Ceiling series has a lifespan of over 50.000 hours, comes complete with integrated power supply and is installed quickly and easily!



PRODUCT FEATURES

| | | | |
|--|---|---|------------------------|
| Suitable for wall mounting | ✓ | Nominal voltage | 230 230 Volt |
| Suitable for wall mounting | ✓ | Nominal current | 500 500 Milliampere |
| Suitable for suspended mounting | ✗ | Max. number of luminaires per miniature circuit breaker B16 (MCB) | 50 |
| Suitable for ceiling mounting | ✓ | Max. number of luminaires per miniature circuit breaker C16 (MCB) | 55 |
| Suitable for built-in mounting | ✗ | Rated ambient temperature according to IEC 62722-2-1 | -10 40 Degrees celsius |
| Suitable for surface mounting | ✓ | Luminaire efficacy | 80 Lumen/Watt |
| Suitable for light line configuration | ✗ | Max. system power | 10 Watt |
| Suitable for workplace according to EN 12464-1 | ✗ | Colour temperature | 3000 3000 Kelvin |
| Lamp type | LED not exchangeable | Power factor | 0.9 |
| With light source | ✓ | Width | 168 Millimetre |
| Lamp holder | Other | Height/depth | 39 Millimetre |
| Housing material | Aluminium | Length | 168 Millimetre |
| Surface protection housing | Lacquered | Number of poles | 3 |
| Housing colour | White | Conductor cross section | 1.5 Square millimetre |
| Material cover | Plastic, opal | | |
| Type of grid | None | | |
| Voltage type | AC | | |
| Type of control gear | LED operating device current-controlled | | |
| With control gear | ✓ | | |
| Exchangeable control gear | ✓ | | |
| Dimming 0-10 V | ✗ | | |
| Dimming 1-10 V | ✗ | | |
| Dimming DALI | ✗ | | |
| Dimming DALI-2 | ✗ | | |
| Dimming DMX | ✗ | | |
| Dimming DSI | ✗ | | |
| Dimming GPRS | ✗ | | |
| Dimming LineSwitch | ✗ | | |

LED Pro-Ceiling

LED Pro-Ceiling + microwave sensor

40001260S

EAN: 8720615508143

PRODUCT FEATURES

(continuation)

| | |
|---|---------------------------|
| Dimming manufacturer's proprietary system | ✗ |
| Dimming mains voltage modulation | ✗ |
| Dimming phase cut-off (trailing edge) | ✗ |
| Dimming phase cut-on (leading edge) | ✗ |
| Dimming programmable | ✗ |
| Dimming potentiometer (integrated) | ✗ |
| Dimming RF | ✗ |
| Dimming Touch and Dim | ✗ |
| Dimming Sine Wave Reduction | ✗ |
| Dimming Zigbee | ✗ |
| Dimming with push-button | ✗ |
| Light distributor | Diffuser lens/optic/panel |
| No dim function | ✓ |
| Light distribution | Symmetric |
| Dimming depending on control gear | ✗ |
| Beam angle | >80° - Extreme wide beam |
| Colour consistency (McAdam ellipse) | SDCM3 |
| Light outlet | Direct |
| Energy efficiency class of the built-in lamp | A++ |
| Degree of protection (IP) | IP40 |
| Impact strength | IK08 |
| Protection class according to IEC 61140 | I |
| Emergency power supply integrated | ✗ |
| Suitable for emergency lighting | ✗ |
| With movement sensor | ✓ |
| With light sensor | ✗ |
| Covering of the luminaire with thermally insulating material possible | ✓ |
| With air slots | ✗ |
| Colour of light | White |
| Colour rendering index CRI | 80-89 |
| Type of wiring | Ending |
| Connection type | Screw terminal |
| Colour of light adjustable | No |
| Luminous flux adjustable | No |
| Beam angle adjustable | No |
| Operation by Bluetooth | ✗ |
| Compatible with Apple HomeKit | ✗ |
| Compatible with Google Assistant | ✗ |
| Compatible with Amazon Alexa | ✗ |
| IFTTT support available | ✗ |